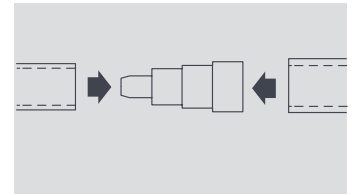


EN

Tube & Connector Fittings

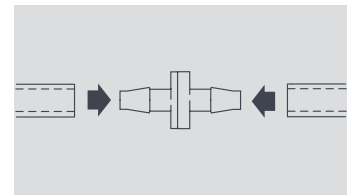
Adaptors/Straight Connectors

OPTIONS			
Size	Ideal Use	Part No.	Pack Qty
6mm – 10mm	1/4" to 3/8"	FP2020	5
6mm, 10mm or 12mm to 16mm	1/4" or 3/8" or 5/8" to 1/2"	FP2632	5



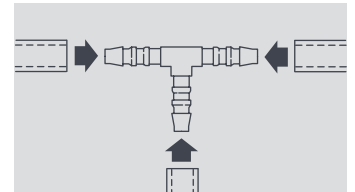
Non-return Valves

OPTIONS			
Size	Ideal Use	Part No.	Pack Qty
6mm (1/4")	Prevents backflow of water	FP2628	5
10mm (3/8")	Prevents backflow of water	FP2630	5



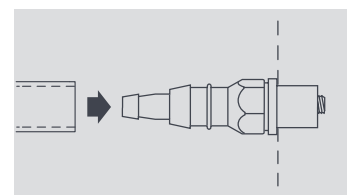
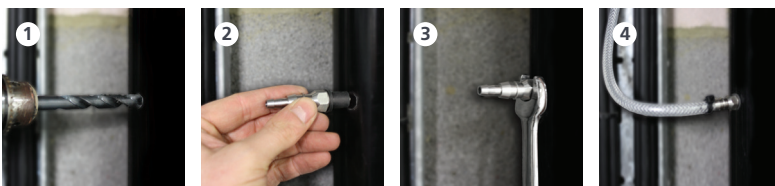
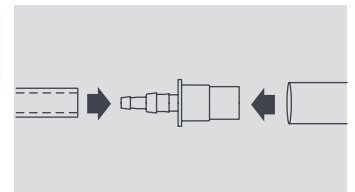
Hose to Hose

OPTIONS			
Size	Ideal Use	Part No.	Pack Qty
6mm (1/4")	Equal "T" Connector	FP2024	5
6mm (1/4")	Elbow Connector	FP2028	5
6mm (1/4")	Straight Connector	FP2622	5
10mm (3/8")	Equal "T" Connector	FP2030	5
10mm (3/8")	Elbow Connector	FP2032	5
10mm (3/8")	Straight Connector	FP2624	5
12mm (1/2")	Equal "T" Connector	FP2035	5
12mm (1/2")	Elbow Connector	FP2037	5
12mm (1/2")	Straight Connector	FP2039	5
15mm (5/8")	Equal "T" Connector	FP2041	5
15mm (5/8")	Elbow Connector	FP2043	5
15mm (5/8")	Straight Connector	FP2045	5



Hose to Overflow or Waste/Soil Pipe

OPTIONS			
Size	Ideal Use	Part No.	Pack Qty
6mm (1/4") or 10mm (3/8") – 21mm overflow pipe	Hose to Overflow	FP2040	3
6mm (1/4") or 10mm (3/8") – self sealing adaptor	Hose to Waste/Soil Pipe (Drill hole to 11.5mm diameter)	FP2038	3



Note: All connectors should be fitted with the relevant cable ties

Information correct at time of going to press.