

Data Sheet

Tube-in-tube heat exchanger Type **HE**

Increases the system efficiency and protects the system against liquid entering the compressor



Tube-in-tube heat exchanger type HE is used primarily for heat transfer between the liquid and suction lines of the refrigeration plant.

The purpose is to utilise the cooling effect, utilise which without a heat exchanger is otherwise lost to the ambient air via uninsulated suction lines.

In the heat exchanger, this effect is used to subcool the refrigerant liquid.

Features:

- High refrigeration capacity in evaporator
- Helps ensure vapour-free liquid ahead of the expansion valve
- HE 0.5-1.5: May be used in the following EX range: Category 3 (Zone 2)
- Maximum utilisation of the evaporator upon setting the thermostatic expansion valve for minimum superheat
- Helps prevent sweating and frosted-up suction lines

Product specification

Technical data

Table 1: Technical data

| | |
|-----------------------|---|
| Refrigerants | R22, R1270 ⁽¹⁾ , R134a, R290 ⁽¹⁾ , R404A, R407A, R407C, R407F, R448A, R449A, R450A, R452A, R507A, R513A, R600 ⁽¹⁾ , R600a ⁽¹⁾ |
| Operating temperature | -60 – 120 °C |
| Max. working pressure | PS / MWP = 28 bar |
| Max. test pressure | Pe = 40 bar |

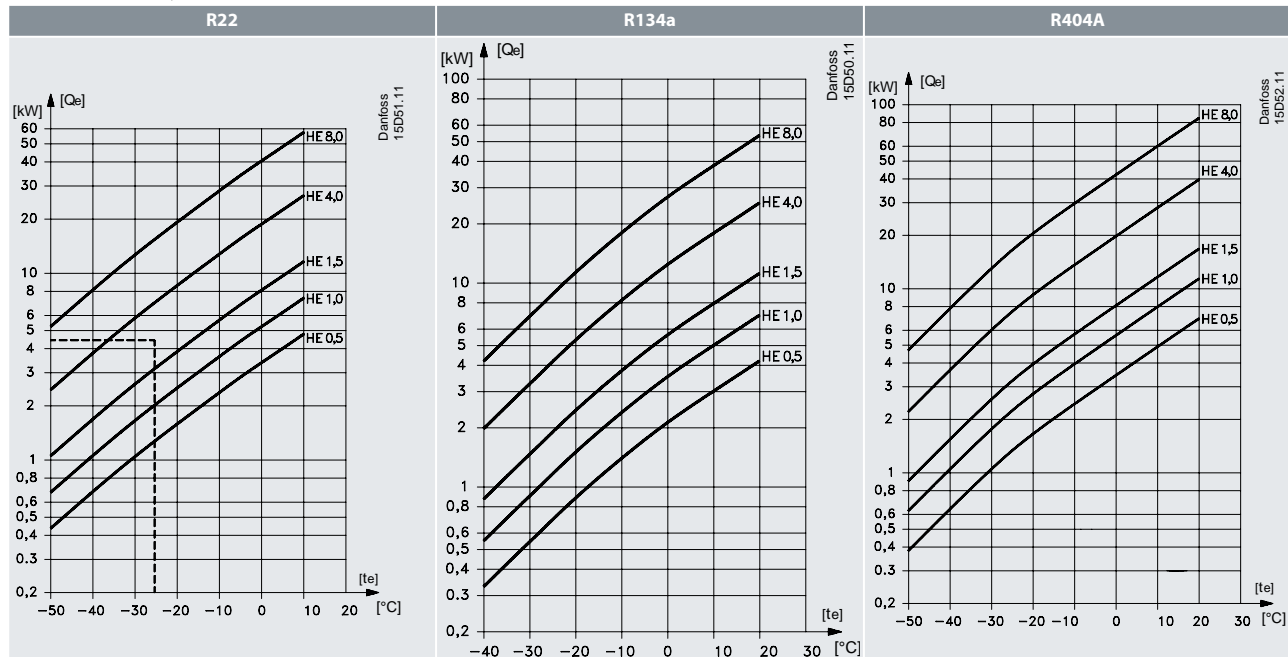
⁽¹⁾ HE 0.5 - 1.5 only

This product (HE 0.5 - 1.5) is evaluated for R290, R600, R600a and R1270 by ignition source assessment in accordance with standard EN ISO80079-36.

For complete list of approved refrigerants, visit www.products.danfoss.com and search for individual code numbers, where refrigerants are listed as part of technical data.

Capacity

Table 2: Capacity



Precise heat exchanger sizing can be obtained from the curves which show plant capacity Q_e for R22, R134a and R404A depending on evaporating temperature t_e .

Example

Plant capacity $Q_e = 4.5 \text{ kW}$

Refrigerant = R22

Evaporating temperature $t_e = -25 \text{ °C}$

The curve for R22 shows that an HE 4.0 is suitable. The curve for HE 4.0 lies immediately above the intersection of the lines

through $Q_e = 4.5 \text{ kW}$ and $t_e = -25 \text{ °C}$.

Heat flow Q during heat exchange is calculated from the formula: $Q = k \times A \times \Delta t_m$

Q -heat flow in [W]

k -heat transfer coefficient in [W/m^2] [$^\circ\text{C}$]

A transfer area of the heat exchanger in [m^2]

Δt_m average temperature difference in [$^\circ\text{C}$], calculated from the formula:

Tube-in-tube heat exchanger, Type HE

$$\Delta t_m = \frac{\Delta t_{\max.} - t_{\min.}}{\ln \frac{\Delta t_{\max.}}{\Delta t_{\min.}}}$$

$k \times A$ values Determined by experiment (see table).

| Type | $K \times A$ |
|--------|--|
| | Dry suction gas / refrigerant liquid ⁽¹⁾ (normal use in refrigeration plants with fluorinated refrigerants) [W] / [°C] |
| HE 0.5 | 2.3 |
| HE 1.0 | 3.1 |
| HE 1.5 | 4.9 |
| HE 4.0 | 11.0 |
| HE 8.0 | 23.0 |

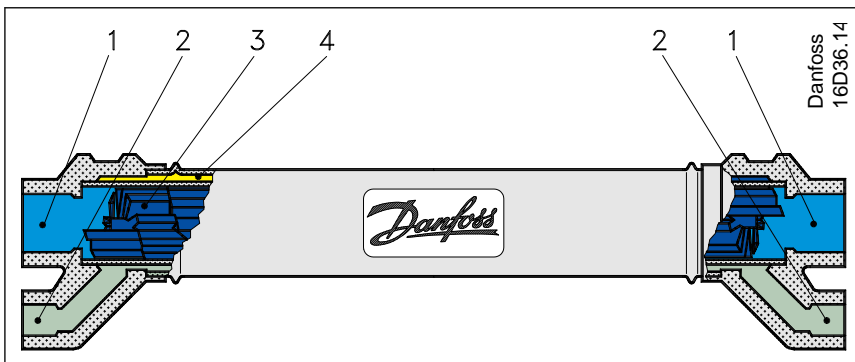
⁽¹⁾ These figures apply to dry gas only.

Even if a thermostatic expansion valve is used, the suction gas will carry very small liquid drops into the suction line.

The fins of the HE catch these drops which then evaporate.

This may result in a smaller superheat than the theoretically calculated value.

Design



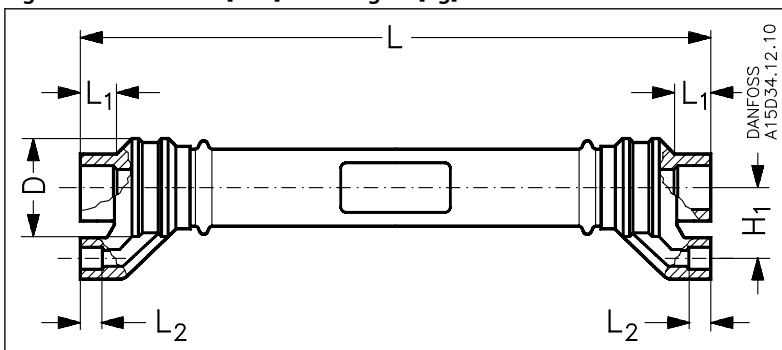
- | | |
|----|-------------------------|
| 1. | Suction line connection |
| 2. | Liquid line connection |
| 3. | Inner chamber |
| 4. | Outer chamber |

Offset fin sections are built into the inner chamber (3) and result in a turbulent gas flow with minimum flow resistance. The gas flows straight through without changing direction and without oil pockets.

Refrigerant liquid flows in the opposite direction to the gas, through the small outer chamber (4). The flow is guided by a built-in wire coil so that maximum heat transfer is achieved. The hot liquid flowing through the outer chamber normally protects the outer tube from "sweating".

Dimensions [mm] and weights [kg]

Figure 1: Dimensions [mm] and weights [kg]

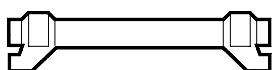


Tube-in-tube heat exchanger, Type HE

Table 3: Dimensions [mm] and weights [kg]

| Type | H ₁ | L | L ₁ | L ₂ | øD | Net weight | Volume | |
|--------|----------------|-----|----------------|----------------|------|------------|----------------------------------|----------------------------------|
| | | | | | | | Outer chamber [cm ³] | Inner chamber [cm ³] |
| HE 0.5 | 20 | 178 | 10 | 7 | 27.5 | 0.3 | 8.5 | 23 |
| HE 1.0 | 25 | 268 | 12 | 9 | 30.2 | 0.5 | 25 | 45 |
| HE 1.5 | 30 | 323 | 14 | 10 | 36.2 | 1 | 40 | 100 |
| HE 4.0 | 38 | 373 | 20 | 10 | 48.3 | 1.5 | 80 | 260 |
| HE 8.0 | 48 | 407 | 29 | 10 | 60.3 | 2.3 | 175 | 475 |

Ordering



| Type | Solder connection ODF | | | | Code no. |
|--------|-----------------------|------|--------------|------|----------|
| | Liquid line | | Suction line | | |
| | [in.] | [mm] | [in.] | [mm] | |
| HE 0.5 | – | 6 | – | 12 | 015D0001 |
| | 1/4 | – | 1/2 | – | 015D0002 |
| HE 1.0 | – | 10 | – | 16 | 015D0003 |
| | 3/8 | – | 5/8 | – | 015D0004 |
| HE 1.5 | – | 12 | – | 18 | 015D0005 |
| | 1/2 | – | 3/4 | – | 015D0006 |
| HE 4.0 | – | 12 | – | 28 | 015D0007 |
| | 1/2 | – | 1 1/8 | – | 015D0008 |
| HE 8.0 | – | 16 | – | 42 | 015D0009 |
| | 5/8 | – | 1 5/8 | – | 015D0010 |

Generally, the size of an HE heat exchanger can be determined from the connections corresponding to the pipe dimensions of the refrigeration plant.

The design is such that normal suction gas velocities are achieved, with a subsequent small pressure drop. Thus the heat exchanger capacity will match plant capacity.

At the same time, oil return to the compressor is ensured.

If the main object is to avoid sweating and frosting-up of the suction line, the HE can be chosen one size larger than the size determined by the capacity. An HE used as an auxiliary condenser must always be selected according to the connection dimensions.

Certificates, declarations, and approvals

The list contains all certificates, declarations, and approvals for this product type. Individual code number may have some or all of these approvals, and certain local approvals may not appear on the list.

Some approvals may change over time. You can check the most current status at danfoss.com or contact your local Danfoss representative if you have any questions.

Table 4: Certificates, declarations, and approvals

| File name | Document type | Document topic | Approvals Authority |
|--|---------------------------|----------------|---------------------|
| Danfoss 034L9625.AB | Manufacturers Declaration | PED/RoHS | Danfoss |
| Danfoss 034R9541.AA | Manufacturers Declaration | China RoHS | Danfoss |
| Document - EAC RU Д-ДК.БЛ108.В.00327_18 | EAC Declaration | EAC | EAC |
| Document - LLC CDC EURO-TYSK UA.089.D.00001-19 | UA Declaration | TYSK | TYSK |

Online support

Danfoss offers a wide range of support along with our products, including digital product information, software, mobile apps, and expert guidance. See the possibilities below.

The Danfoss Product Store



The Danfoss Product Store is your one-stop shop for everything product related—no matter where you are in the world or what area of the cooling industry you work in. Get quick access to essential information like product specs, code numbers, technical documentation, certifications, accessories, and more.

Start browsing at store.danfoss.com.

Find technical documentation



Find the technical documentation you need to get your project up and running. Get direct access to our official collection of data sheets, certificates and declarations, manuals and guides, 3D models and drawings, case stories, brochures, and much more.

Start searching now at www.danfoss.com/en/service-and-support/documentation.

Danfoss Learning



Danfoss Learning is a free online learning platform. It features courses and materials specifically designed to help engineers, installers, service technicians, and wholesalers better understand the products, applications, industry topics, and trends that will help you do your job better.

Create your Danfoss Learning account for free at www.danfoss.com/en/service-and-support/learning.

Get local information and support



Local Danfoss websites are the main sources for help and information about our company and products. Find product availability, get the latest regional news, or connect with a nearby expert—all in your own language.

Find your local Danfoss website here: www.danfoss.com/en/choose-region.

Coolselector®2 - find the best components for you HVAC/R system



Coolselector®2 makes it easy for engineers, consultants, and designers to find and order the best components for refrigeration and air conditioning systems. Run calculations based on your operating conditions and then choose the best setup for your system design.

Download Coolselector®2 for free at coolselector.danfoss.com.