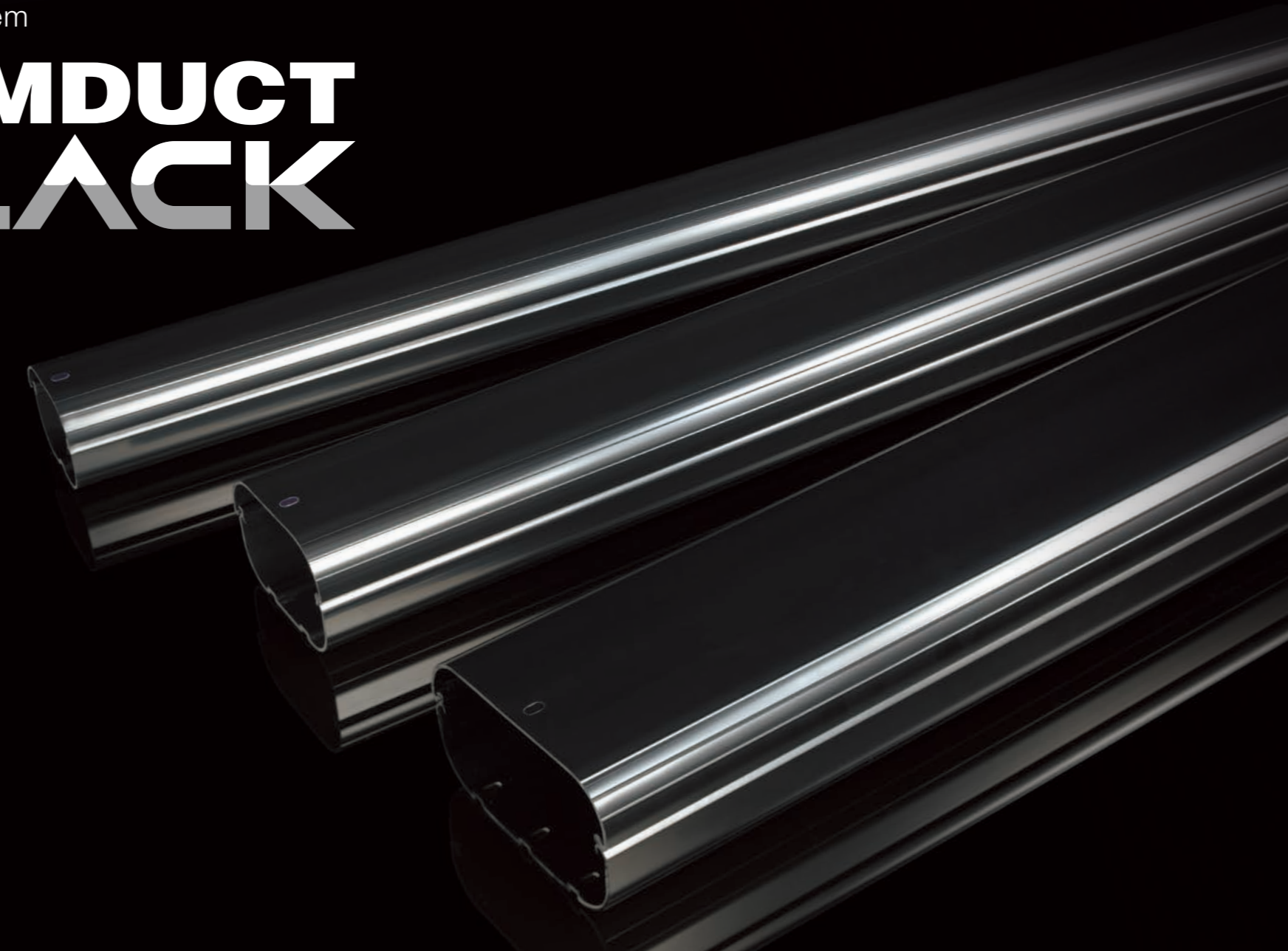


**INABA DENKO**

Trunking System

# SLIMDUCT BLACK



**INABA DENKI SANGYO CO., LTD.**

Overseas Sales Department INABA DENKO Div

10F, 4-11-14, Itachibori, Nishi-ku, Osaka, Japan, 550-0012

Tel: +81-(0)6-4391-1951 Fax: +81-(0)6-4391-1958

E-mail: [inabadenko-overseas@gr-inaba.com](mailto:inabadenko-overseas@gr-inaba.com) <https://www.inaba-denko.com/en/>



Have you met the perfect BLACK?

The world is about to find out that  
INABA's new black is the new "Black".

These black never goes out of style.



Beautiful

Bringing the art to the wall.

Quality of surface appearance



Surface of SLIMDUCT Black is so shiny and brilliant, even after several years, it can keep beautiful surface just by wiping it.



Film protects surface of straight trunking from any scratches or damages before using.

# Heat Resistance

Before Testing



Putting INABA DENKO SLIMDUCT and competitor's product in the Thermostatic oven to test their Heat Resistance.



INABA DENKO SLIMDUCT could keep its shape even under 80°C condition.

# UV Test result

Competitor's Product

Competitor's Black Duct fades quickly after exposure to UV.

INABA DENKO

SLIMDUCT BLACK will maintain the color tone for long term.



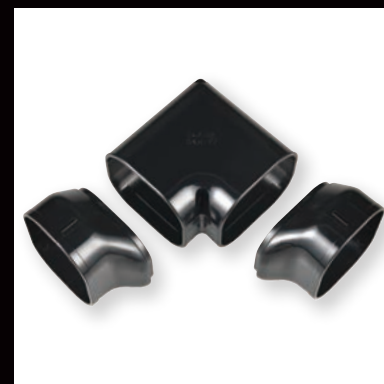
# Fittings



SIF



SJA



SN



SKM



SCM



SWA



SWC



SC



SCF



SE



SF



SJ



SK



SKF



SP



ST



SW



SKS

# Construction example



ADL Air Conditioning (UK)



Temp Technical (UK)



Cool Wave (New Zealand)



South Downs AC (UK)



South Downs AC (UK)



(USA)



Tempo Aircon (Australia)



Temp Technical (UK)



Sanders Airconditioning (Netherlands)



Temp Technical (UK)