

# Technical data sheet

## SmellyJelly®

### Fragrancing gel



The importance of coil cleaning cannot be underestimated, and as a perfect finishing touch - Advanced has developed SmellyJelly®. It releases a pleasant fragrance that gives a 'just-cleaned' freshness to the evaporator and its environment.

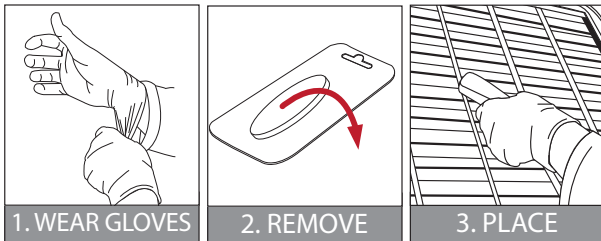
#### PRODUCT SPECIFICATION

Name	SmellyJelly®
Product Code	See below
Packing Quantity (ml, L)	20 Cards
Packing Size (L x H x D cm)	30 x 27 x 12.5
Shipping Weight (kg)	1.32
Shipping Volume (m3)	0.0012

#### Special Features

- Designed for large fan coil and cassette units.

### Directions of use



Remove gel from packaging and place one SmellyJelly® on a clean, flat surface, ideally just before the discharge grille, using fixings provided. However, in cassette units, placing the gel on the back of the filter may be required. Once in the air stream, SmellyJelly® will begin to work. As it works it will evaporate and shrink. Evaporation rate varies with cooling/heating. Replace as required when fragrance has been exhausted. Place card with instructions inside unit for future reference. Store away from heat and sunlight at all times.

Part No.	Fragrance
S090002	SmellyJelly® Size 1 Citrus
S090003	SmellyJelly® Size 1 Floral
S090051GB	SmellyJelly® Size 1 Apple
S090006	SmellyJelly® Size 1 Morning
S090007	SmellyJelly® Size 1 Mountain
S090058GB	SmellyJelly® Size 1 Orange
S090008	SmellyJelly® Size 1 Mixed



# Technical data sheet

**Advanced Engineering Ltd**  
 Guardian House, Stroudley Road  
 Basingstoke, Hampshire, RG24 8NL, UK  
 Tel +44(0)1256 460300  
 www.advancedengineering.co.uk

**advanced  
 engineering**

		<b>SmellyJelly® Orange Warning</b> Contains: D-Limonene
---	---	--

H317: May cause an allergic skin reaction. H411: Toxic to aquatic life with long lasting effects. EUH208: Contains Limonene. May produce an allergic reaction. P102: Keep out of reach of children. P262: Do not get in eyes, on skin, or on clothing. P264: Wash hands thoroughly after handling. P280: Wear protective gloves. P302+P350: IF ON SKIN: Gently wash with plenty of soap and water.



**SmellyJelly® Size 1 Orange  
S090058GB**

		<b>SmellyJelly® Apple</b>
--	--	-------------------------------

EUH208: Contains hexyl salicylate. May produce an allergic reaction. H412: Harmful to aquatic life with long lasting effects. P102: Keep out of reach of children. P262: Do not get in eyes, on skin, or on clothing. P264: Wash hands thoroughly after handling. P280: Wear protective gloves. P302+350: IF ON SKIN: Gently wash with plenty of soap and water.



**SmellyJelly® Size 1 Apple  
S090051GB**

		<b>SmellyJelly® Citrus Warning</b> Fragrance - Citrus Trio 1059
--	--	--

H317: May cause an allergic skin reaction. H411: Toxic to aquatic life with long lasting effects. EUH208: Contains D-LIMONENE; CITRAL; GERANIOL; NEROLEX (SRS) NEROL 900 (BBA); C12H240 (2); C12H240 (1). May produce an allergic reaction. P102: Keep out of reach of children. P262: Do not get in eyes, on skin, or on clothing. P264: Wash hands thoroughly after handling. P280: Wear protective gloves. P302+P350: IF ON SKIN: Gently wash with plenty of soap and water.



**SmellyJelly® Size 1 Citrus  
S090002**

		<b>SmellyJelly® Floral Warning</b>
---	--	--

EUH208: Contains 2-methyl-3-(p-isopropylphenyl) propionaldehyde, amyl cinnamic aldehyde, benzyl salicylate, hexyl cinnamic aldehyde, pinenes. May produce an allergic reaction. H317: May cause an allergic skin reaction. H412: Harmful to aquatic life with long lasting effects. P102: Keep out of reach of children. P262: Do not get in eyes, on skin, or on clothing. P264: Wash hands thoroughly after handling. P280: Wear protective gloves. P302+350: IF ON SKIN: Gently wash with plenty of soap and water.



**SmellyJelly® Size 1 Floral  
S090003**

		<b>SmellyJelly® Morning Warning</b> Fragrance - NATSU FO1/2 M000013
---	---	---

EUH208: Contains c13h1603, helional, p-tert-butyl-alpha-methylhydrocinnamic aldehyde. May produce an allergic reaction. H317: May cause an allergic skin reaction. H411: Toxic to aquatic life with long lasting effects. P102: Keep out of reach of children. P262: Do not get in eyes, on skin, or on clothing. P264: Wash hands thoroughly after handling. P280: Wear protective gloves. P302+350: IF ON SKIN: Gently wash with plenty of soap and water.



**SmellyJelly® Size 1 Morning  
S090006**

		<b>SmellyJelly® Mountain</b>
--	--	----------------------------------

EUH208: Contains d-limonene, hexyl cinnamic aldehyde, hydroxycitronellal, lixetone, citronellol. May produce an allergic reaction. H412: Harmful to aquatic life with long lasting effects. P102: Keep out of reach of children. P262: Do not get in eyes, on skin, or on clothing. P264: Wash hands thoroughly after handling. P280: Wear protective gloves. P302+P350: IF ON SKIN: Gently wash with plenty of soap and water.



**SmellyJelly® Size 1 Mountain  
S090007**