

# Easy~Fit - Type 2 Brackets



## Easy~Fit Type 2 Brackets

These flat-packed, self assembly brackets provide a professional finish to the installation of wall mounted outdoor condensing units and air source heat pumps. The Type 2 brackets have a crossbar allowing the uprights to be spaced exactly as required, and include wall spacers to help level the unit on uneven walls. All components receive a powder coating, with a scratch resistant, textured finish in a colour (RAL 7032) to match most brands of condensing units and domestic air source heat pumps.

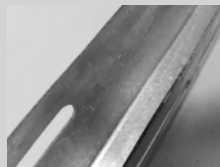
### Features

- Integral spirit level for easier, correct installation
- Uprights mount anywhere on the crossbar which enables the arm span to be adjusted easily
- Adjustable wall spacers to level the arms
- Safe working load up to 250kg
- Suitable to match most brands of condensing units and domestic air source heat pumps
- Extra long arms (up to 660mm available for larger condensing units)
- Textured finish in (RAL 7032)

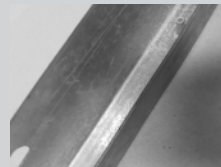
### The Package

- Crossbar with Spirit Level
- 2 x Support Arms
- 2 x Uprights
- Fixings
- Installation Instructions

### Weather Protection Process



**Process One**  
Corrosion resistant raw material, often referred to as Zintec



**Process Two**  
Zinc phosphating process, multi stage cleaning & dipping chemical zinc



**Process Three**  
ED coating process: electrophoretic deposition (aka ED or EPD) coating



**Process Four**  
Epoxy polyester powder coating

### Related Products

**All Guards  
Collection Trays**

Sea salts are very corrosive and affect both ferrous and non-ferrous metals. Coastal installations are particularly at risk as they are frequently exposed to sea salt solutions followed by dry periods, where this wet/dry cycle produces a very corrosive environment. We strongly recommend that in such locations only our stainless steel brackets are installed.

Part Code	Description	Safe Working Load*	Max Load	Crossbar	Upright	Support Arm	Weight
CBR2-S	Type 2 Bracket – Small	60kg	120kg	720mm	400mm	400mm	3.8kg
CBR2-M	Type 2 Bracket – Medium	90kg	180kg	900mm	500mm	500mm	4.6kg
CBR2-L	Type 2 Bracket – Large	140kg	280kg	1100mm	550mm	540mm	6.6kg
CBR2-XL	Type 2 Bracket – Extra Large	250kg	500kg	1040mm	550mm	660mm	16.2kg

All brackets are tested to twice the safe working loads at an independent UK facility.

The Pump House sales team are available to answer your questions or queries on this product. Our experts are waiting for your call **+44 (0)115 900 5858** or if you prefer send an email to **sales@pumph.co.uk** or visit **www.pumph.co.uk**

